
Release 7.2

Freedom to Connect Live with your Data Landscape

Introducing Sisense 7.2



Live Data Models



Data Dictionary



White Labeled Mobile App

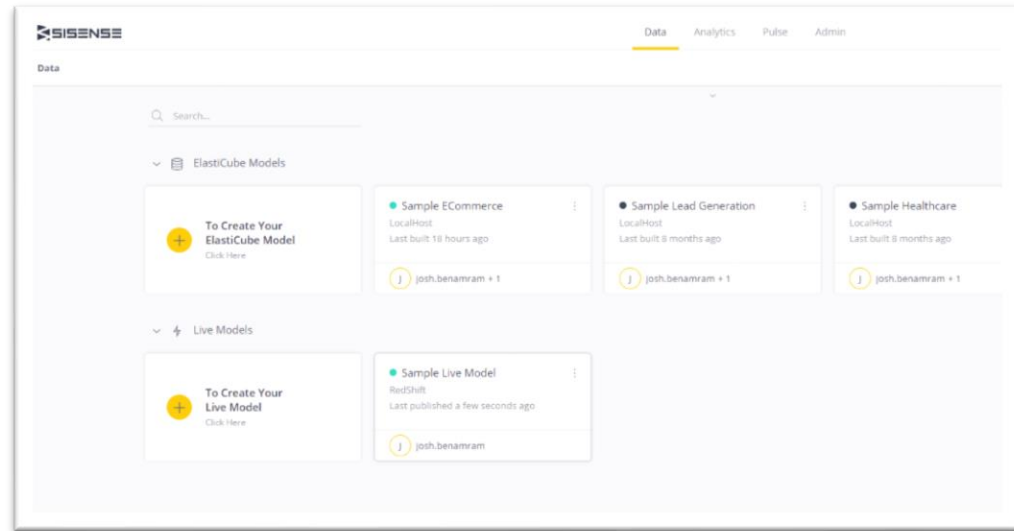


Sisense BloX

Live Data Models

Provide users the freedom to query data in real-time

- Create ElastiCube or Live data models using the same web-based Data Manager
- Analyze ElastiCube and Live Data together on the same dashboard
- Leverage existing high performance database investments, initially for SQL Server and Amazon Redshift



White Labeled Mobile App

Deliver branded analytics anywhere - and on any device

- Provide a completely white labeled and rebranded mobile application for analytics
- Comprehensive branded mobile experience from the app's look and feel to description text in the app store
- The branded mobile app is associated with the clients respective online brand name and store (Google Play & iTunes)



Sisense BloX: Certified Plug-In

Create beautiful, custom widgets with integrated application functionality

- Empowers developers to easily build 'infographic' style widgets directly in the dashboard using standard JSON and HTML5
- Makes it easy to integrate application like functionality such as sliders and write-back into each widget
- Dashboard designers can leverage and customize existing templates



Average Price Per Guest

21\$

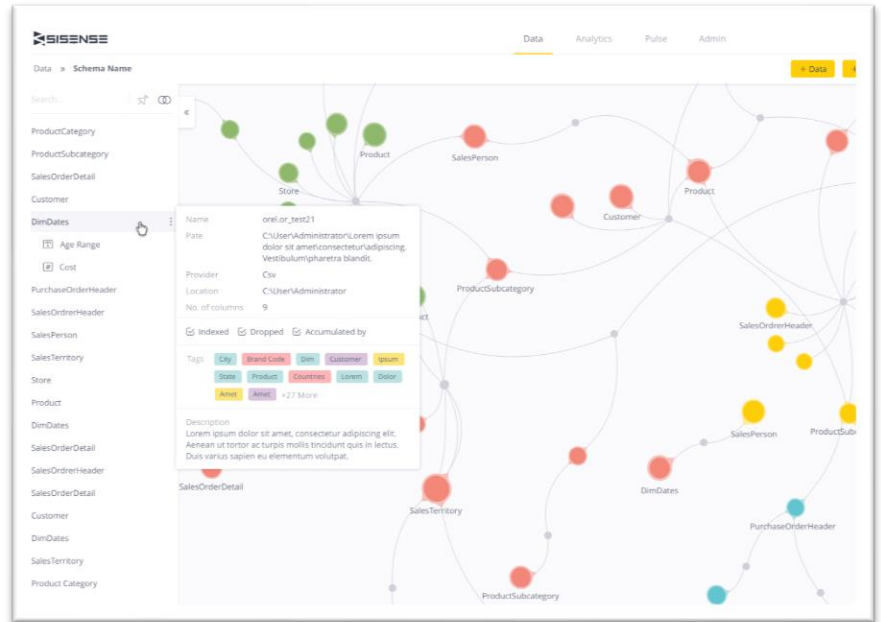
Avg. Price - 3 Guests

```
1- 2- 3- 4- 5- 6- 7- 8- 9- 10- 11- 12- 13- 14- 15- 16- 17- 18- 19- 20- 21- 22- 23- 24- 25- 26- 27- 28- 29- 30-
  "type": "AdaptiveCard",
  "title": "Multi Purpose Card",
  "showCarousel": true,
  "panels": [
    {
      "name": "Items",
      "type": "visible",
      "metadata": {
        "types": [
          "dimensions"
        ],
        "maxitems": 10
      },
      "visibility": true,
      "defaultValue": "Item Name"
    },
    {
      "name": "Values",
      "type": "visible",
      "metadata": {
        "types": [
          "measures"
        ],
        "maxitems": 10
      },
      "visibility": true,
      "defaultValue": 20
    }
  ],
  ]
```

Data Dictionary

Drive improved understanding of your data models

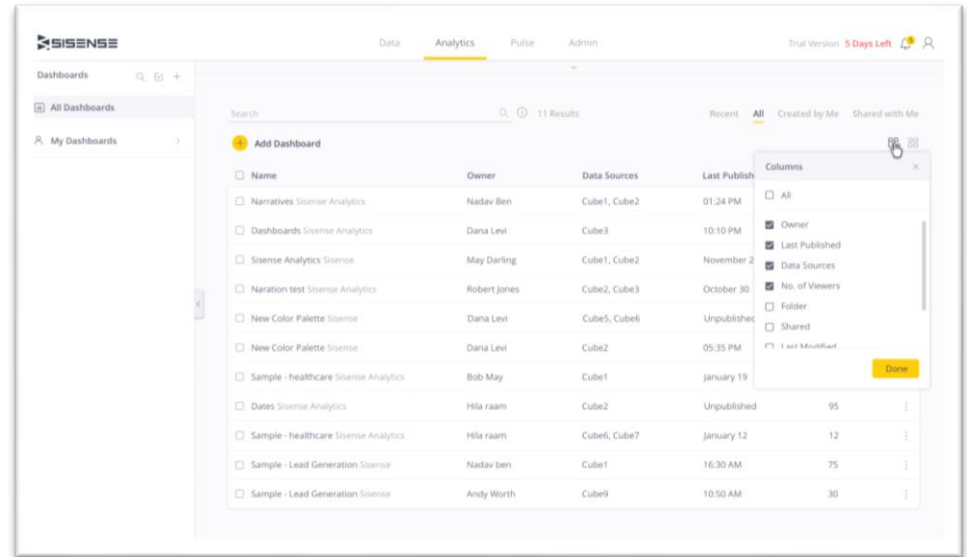
- Add descriptions and tags to data fields and tables in data models
- Utilize metadata information for search and easier organization
- Bolster understanding between multiple data admins working on the same data model



Enhanced Dashboard Administration

Simplify the day-to-day management of dashboards

- New layout to manage dashboards in a list view
- Enhanced operational criteria to search for dashboards based on owners
- Gain new information when a dashboard was last modified and last published



More 7.2 Highlights

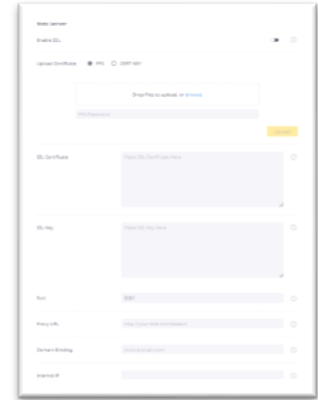
Administration Enhancements

- New rank functions and improvements in ElastiCube memory consumptions
- Numerous bugs fixed implemented within the application



DevOps Enhancements

- Simplify installation and upgrades, especially in HA environments
- Pulse support in High Availability environments
- A new, centralized UI maintains existing configuration and customizations during upgrades, including the web server and application database



Security Enhancements

- New session management methods as well as set limits for inactive user sessions
- New SSL Certificates and more ports for internal communication



—
Thank You